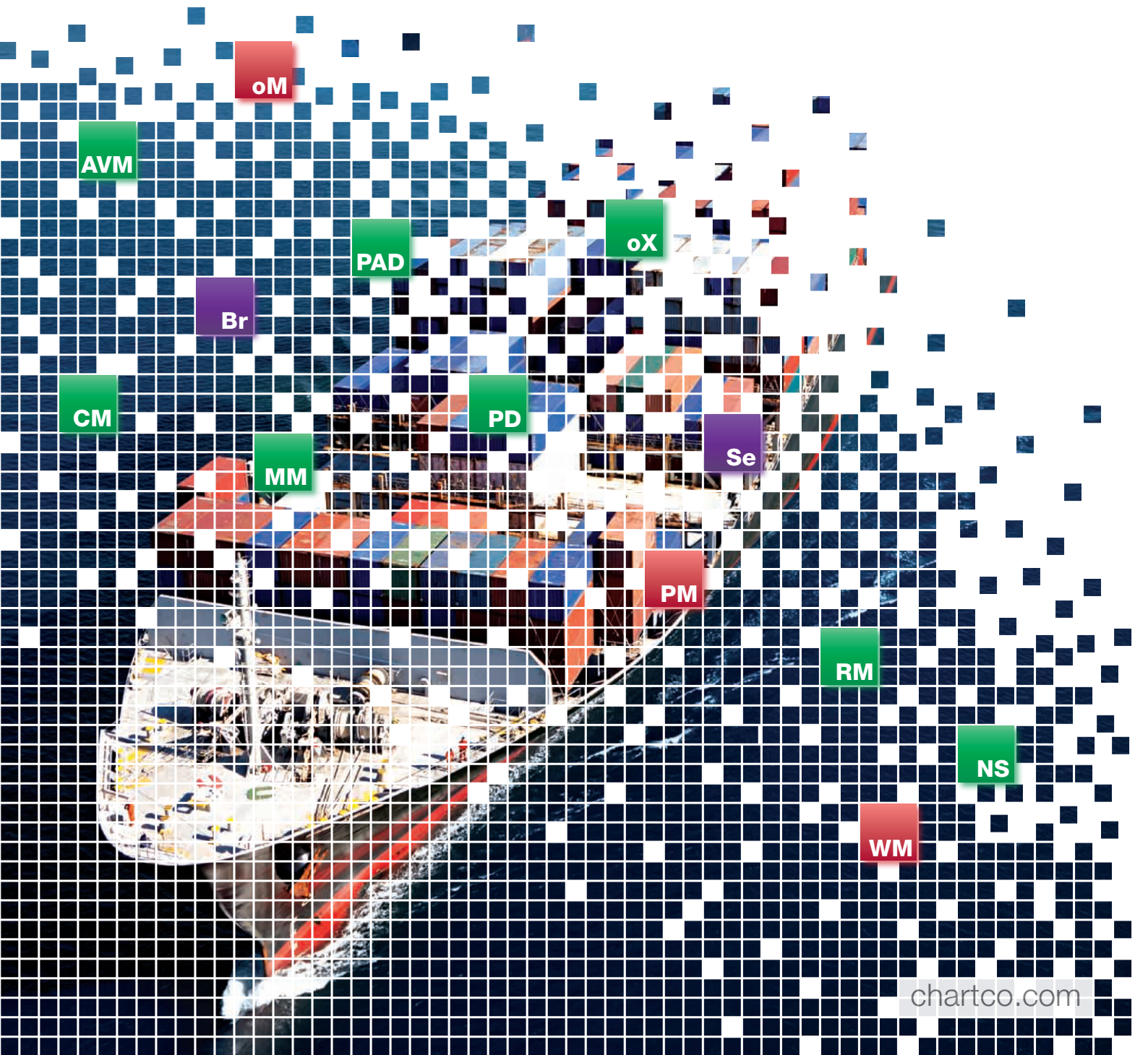




Approved. On time. Up to date.



The ChartCo Pedigree

From its formation in 1998, ChartCo has established itself as a world-leader in the supply of marine data services and products to an ever-increasing client base.

ChartCo is justifiably proud of its track record; a unique global broadcast service, first to market with an ENC and ARCS update service, and a comprehensive range of data products.

Its latest offering to the market is PassageManager™, again an industry first.

Vessels may access the ChartCo service using email or internet as well as broadcast. Almost all maritime communication systems are supported.

Today, ChartCo continues to innovate and develop cutting edge data products and is widely regarded as the leader and an expert within its field.

In-house Expertise

Every ChartCo customer receives the most advanced 24/7 technical support from our in-house Support Desk, as standard.

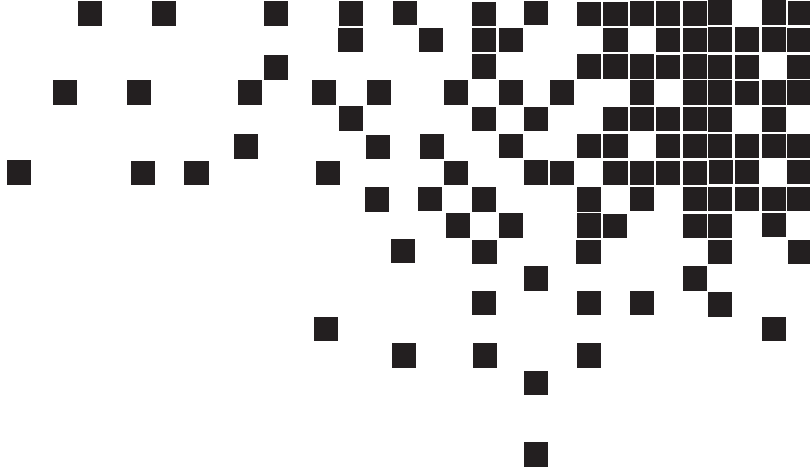
All Support Desk Operatives are skilled in both the product and computer systems.

Turnkey Projects

At ChartCo, we offer full project management of single vessels or a fleetwide installation. We can also provide fully configured PCs if required.

With trained engineers around the globe, any vessel can be fully operational within days of confirmation of order.

- Data delivery by email, internet or broadcast.
- Industry leading data compression of up to 80%.
- An ENC updating service.
- Over a decade of investment in software development.
- Real support, from real experts, 24/7.



- Data Delivery
- Data Management Suite
- Services

Data Delivery

Select

Data and services delivered via the internet or email.



Broadcast

Data and services delivered via Inmarsat satellite communication terminals.



Products included in ChartCo software as part of the ChartCo service

oceanMaster™

Data management suite. Provides access to all services.



WebManager™

Shore-based monitoring and/or management of vessel outfits.



PassageManager™

Full passage planning and paper/electronic chart product management and purchase.



Subscription based services

ChartManager™

Paper chart and Publications Corrections with Digital Notices to Mariners.



MetManager™

Onboard weather forecast and routing service.



oceanXpress™

Electronic navigation update service.



AVManager™

– Anti-Virus software
– Daily updates



Port Data

Enhanced Port Information via subscription services.



RegsManager™

Digital regulations for vessels and offices.



Piracy Alert Data

Daily updates on global piracy hotspots.



News Services

Electronic newspapers and publications for your crew.



ChartCo Select

Data delivery via email or internet

Se

ChartCo Select enables a vessel to manage all of its services and download updates via either:

- Direct internet IP connection to the ChartCo server.
- As email attachments via the vessel's normal communications system.

ChartCo Select enables quick and easy download of all ChartCo data services at the touch of a button. Data collection can be automated, or on demand, making best use of the communication systems available.

Benefits

ChartCo Select can be used on a stand-alone basis, alongside the ChartCo Broadcast Service on a single vessel, or within mixed fleet applications. It is simple to use and can be accessed over any internet connection including 3G, GPRS, Broadband, WiFi or via email.

Using the comprehensive software provided, vessels can request as much, or as little, data as is required.

Combined with ChartCo proprietary compression techniques, communication costs are kept to an absolute minimum.

Each month vessels receive cumulative data CDs ensuring safety and compliance at all times.

Key Features

- Monthly cumulative data CD.
- Compatible with all maritime data communication systems.
- Proprietary compression techniques keep communication costs to a minimum.
- Software can be configured to allow the end-user to collect only the data that is required at that time, minimising communication costs.

Requirements

- Access through 3G, GPRS, Broadband, WiFi or Iridium Openport.
- Most standard email systems supported for automatic collection of data.
- Standard PC meeting ChartCo's minimum requirements which can be networked or stand-alone.

Stay connected with complete control of all your ChartCo data services. Download only the data you need, exactly when you want it, how you want it.

ChartCo Broadcast

Data delivery broadcast via satellite

Br

ChartCo Broadcast is a unique system that enables delivery of bulk data to vessels at sea reliably, quickly and economically.

ChartCo Broadcast uses the Inmarsat network and a specially allocated ChartCo global frequency that delivers data to the vessel. A dedicated decoder is used to decrypt data and pass it to the ChartCo software.

The ChartCo Decoder has been used and trusted onboard vessels for over ten years, and has been specially designed for use with the ChartCo service. It interfaces to a vessel's Inmarsat terminal without interfering with normal vessel communications.

Benefits

Data is received automatically and without the need for user intervention reducing workload. The associated software provides a comprehensive information management tool.

Complete fixed price plan results in no extra communication costs.

Key Features

- Option to purchase or rent the ChartCo Decoder.
- No hidden costs: all communication costs are fixed and included in the subscription.
- Global coverage.

Requirement

- An Inmarsat B or Fleet terminal.
- Networked or stand-alone standard PC meeting ChartCo's minimum requirements.

Automatic reception of critical chart correction data at a fixed price.

oceanMaster™

Comprehensive data management suite

oM

This software is provided free of charge when subscribing to ChartCo services.

oceanMaster™ is an integrated suite of data management software that enables a vessel to display and manage any number of ChartCo services at one time, using one simple to use interface.

The oceanMaster™ software includes CBT training, as well as a full copy of the user handbook. oceanMaster™ is revolutionising the way vessels operate, easing workload, allowing multi-tasking and ensuring cost effective use of ChartCo services.

With a simple graphical user interface, oceanMaster™ is the centre point for all of ChartCo's services. oceanMaster™ keeps a full catalogue of charts and receives automatic notifications of updates, as well as creating an audit trail with a comprehensive reporting system of key navigational data.

Benefits

oceanMaster™ allows a vessel to keep all of its ChartCo data in one place and makes use of the latest technology to ensure effective data management.

- oceanMaster™ is the focal point for all ChartCo services.
- Saves time with effective management of all ChartCo services using a simple user interface.
- Automatic notification of chart correction data.
- Report creation providing clear audit trails.

Key Features

- Tried and tested software.
- Simple user interface.
- Gateway/interface to all ChartCo services.
- Easy updates of New Editions and Subscriptions.
- Included free as part of the ChartCo service.

Manage all your ChartCo data and keep it up to date simply and effectively. Through a simple interface, enhance safety, save time and ensure peace of mind.

WebManager™

Online service allowing shore-based management of a vessels outfit



The ChartCo WebManager™ service is available to all ChartCo Select subscribers and allows shore-based operators to view the status of a vessel's charts and publications live via the internet.

WebManager™ interfaces to third party management systems.

Allows shore-based operators to audit the vessel outfit status for the whole fleet.

If required, WebManager™ allows vessel operators to control the content of outfits.

Benefits

The WebManager™ service is presented as an easy to use online system with a user-friendly interface. Through a secure log-in, users of the system are able to obtain detailed data on all their vessels including information on the products and services onboard, any outfit changes and the current status of their chart corrections.

Using WebManager™, on-shore staff no longer need to question the vessel prior to audit.

Simple search, sort and report routine allows easy checking of outfits by office staff.

Key Features

- Download a vessel's chart outfit in a number of formats: formats supported include PDF, CSV, XML, or RTF.
- Ensure each vessel is up to date with New Editions and corrections to ensure compliant navigation.
- Password protected.
- Real time information.
- Included free as part of ChartCo service.

Requirement

- Office/shore-based.
- Internet connection.

Online information on the status of a vessel's chart and publication outfits, in the office.



PassageManager™

Managing tomorrow's challenges, today

PM

PassageManager™ is a revolutionary new addition to the range of ChartCo products. An intuitive graphical interface allows product catalogues and vessel outfits to be displayed together with any correction status. Using this information, a comprehensive passage plan can be constructed, saved and printed.

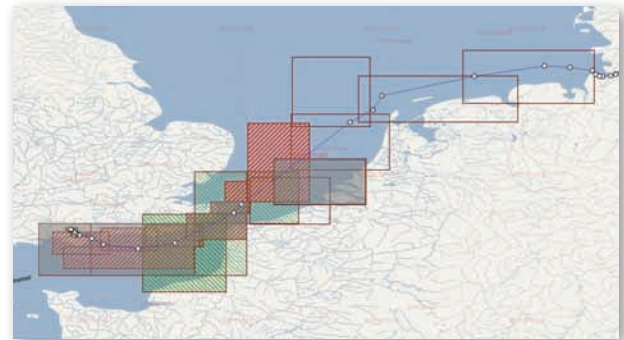
PassageManager™ can be integrated with oceanMaster™ functionality to allow the purchasing of paper and electronic chart products.

Additionally, services such as Port, Tidal and Piracy data can be added to the display as additional layers of data.

Benefits

PassageManager™ allows the user to quickly plot a route and identify the most appropriate products needed to navigate the passage safely and with compliance. New products can be ordered automatically, ensuring that the most cost-effective mix of paper and electronic charts are available.

Fully integrated port and tidal information and access to the complete range of ChartCo data services completes the PassageManager™ product. This freedom of choice sits alongside a straightforward purchasing process using B2B technology to ease workload and save time.



Key Features

- Bespoke system: utilise and update only those products needed to navigate safely and with full compliance.
- Stay up to date with daily updates via ChartCo Select.
- Fully integrated port information (enhanced information available on subscription).
- Complete integration with ECDIS.
- Facility to store and print a complete passage plan.
- Allows 'at a glance' purchasing.
- Fully upgradeable allowing integration of future services.
- Included free as part of the ChartCo service.

Optimise voyage planning.
Integrate with your ECDIS System.
Make every stage of navigation clear,
manageable safe and compliant.
View the product you need for each
voyage at a glance.

Port Data

Enhanced port information

PD

Partnering with IHS Fairplay, ChartCo has taken comprehensive port data, combined it with other additional services, produced a weekly update service and in the process created an expert source of global port information.

This detailed port information can be combined with chart and routing data to provide comprehensive passage plans.

ChartCo's service includes a complete description of the port and all the relevant facilities, plans and mooring diagrams, together with contact details of port service providers and agents. It also includes a maritime atlas and port photographs. All this seamlessly integrates into PassageManager™ so that you can benefit from the most up to date maritime data available.

Benefits

- Up to date port and berthing information.
- Easily accessible port entry forms ensure that all arrival information can be completed well before arrival.
- Can be used stand-alone or with PassageManager™ to quickly create voyage plans.
- Regular news updates regarding port information, easing the planning workload.

Key Features

- Updated weekly.
- Monthly CD backup.
- Available through quarterly or annual subscription.



Comprehensive global port information easing the planning workload prior to port arrival.

ChartManager™

Management and updating of paper charts and publications

CM

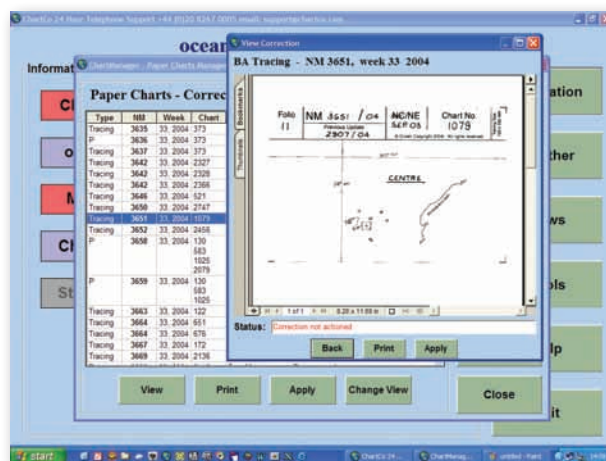
ChartCo delivers digital Notices to Mariners (NMs) and chart correction tracings on a weekly basis as soon as the national authorities release the data. Whilst the complete NM is received onboard each week, only those corrections applicable to the charts in the vessel outfit are highlighted. The full weekly NM is available to view at any time as required.

The vessel may add or delete charts from the vessel's outfit, providing complete flexibility. Notifications of New Editions/ New Charts are also delivered, and receipt of the charts on board may be logged into the system and old records archived. In this way the oceanMaster™ user software provides a comprehensive chart and publications outfit management function.

A log of all corrections applied to each chart is maintained within the system and may be viewed at any time. From these logs, ISM compliant reports of the vessel outfit can be produced.

In addition to UKHO publications, a wide selection of the most common nautical publications carried on board are supported.

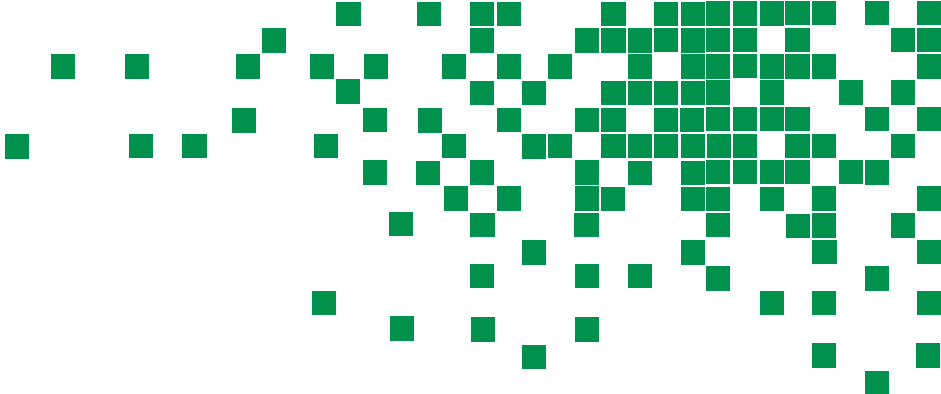
Stay updated and compliant:
timely updates to paper charts and
publications direct to your vessel.



Benefits

The ChartManager™ service provides simple, effective, updates and management of paper navigation charts and publications, giving vessels the ability to add or delete charts from the vessel's outfit as necessary.

Historical corrections for any charts added to the outfit are available immediately. Corrections may be viewed, sorted and printed, as defined by the user, on demand.



Key Features

- Digital Notices to Mariners and paper chart corrections for: BA, US, Japanese, Australian and Norwegian charts.
- Corrections applicable to the vessel's chart outfit are sorted and displayed automatically.
- Outfit management software provides up to date records of all charts in the catalogue.
- ISM compliant reports always to hand.
- Available through ChartCo Select or ChartCo Broadcast.
- Available through quarterly or annual subscription.

Complete flexibility. Ensure optimal time management with automatic notification of corrections.



MetManager™

Marine weather information service

MM

Using the same ChartCo system and software already fitted on many commercial vessels for the receipt of critical chart correction information, the ChartCo MetManager™ service provides comprehensive weather information and computer-based onboard vessel routing advice.

Benefits

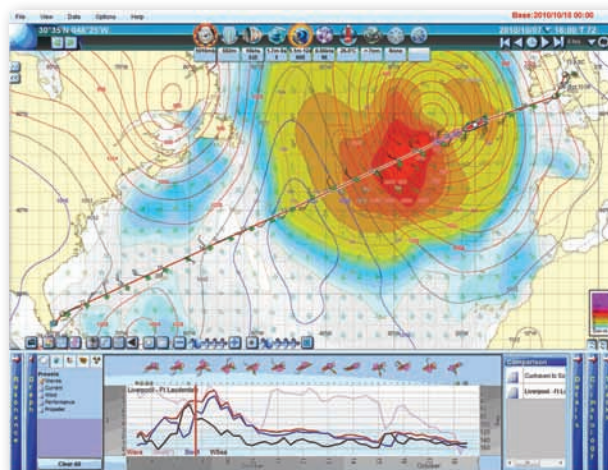
Up to date weather forecasting and routeing capability means that weather damage to the vessel and cargo can be avoided.

ChartCo can also arrange for shore-based routing services based on the same core data, allowing bespoke voyage instructions to be sent to the vessel, which can be imported into the on board software to give convenient visual representation of the proposed route.

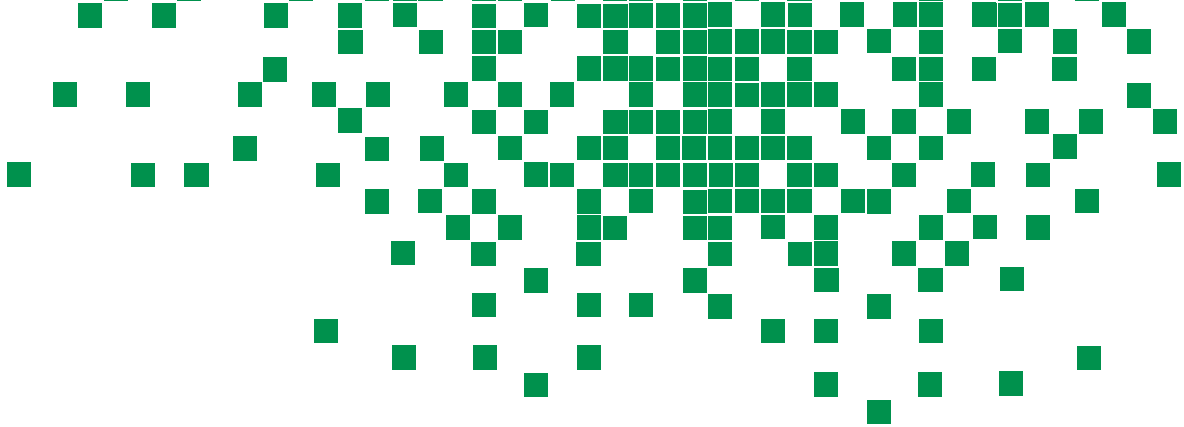
The MetManager™ service is available via ChartCo Select and Broadcast. Service contracts are on the basis of a fixed weekly fee and can be for as short as three months.

Forecast data automatically received on board the vessel without the need for initiation by vessels' crews. All vessels receive highly detailed full ocean region coverage.

Vessel Routing: following receipt of new forecast data, the user can update the computer-based routing advice with enhanced route comparison and track details in order to ensure economic voyage planning.

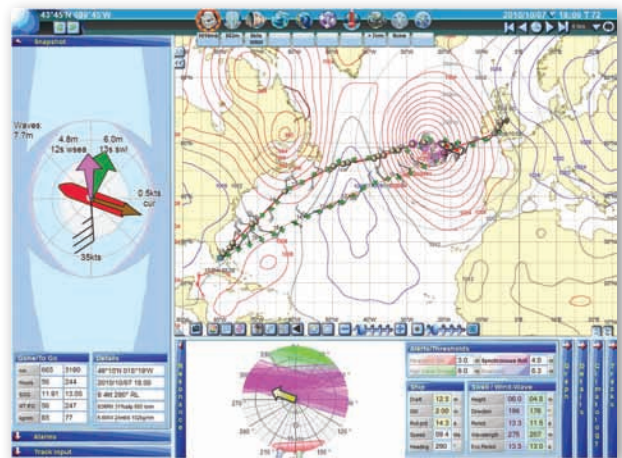


Guaranteed Route Optimisation and up to the minute weather forecasting. Avoid cargo damage and significantly save on your fuel costs.



Key Features

- Weather forecast data updated every six hours.
- As recommended by SOLAS, forecast data is displayed in graphical format and includes:
 - Surface pressure.
 - 500 mb pressure.
 - Wind direction and speed ranges.
 - Significant wave height and swell height.
 - Latest tropical storm information (text and graphical presentation).
 - Significant ocean current information.
 - Ice information (text and graphical).
 - Sea surface temperature analysis.
- Two levels of service are available; 5 Day and 16 Day.
- On board route planning includes:
 - User defined routes, wind and sea limits and no-go areas.
 - Computer recommended routes.
 - Route comparison.
 - Record of weather data for route.
 - Storm and ice bulletins every six hours.
 - Simulation.
 - Optimisation (Best ETA).
 - Optimisation for fuel (Fixed ETA).
 - Port forecast and precipitation data.
 - Data reporting system.
- Available through quarterly or annual subscription.



oceanXpress™

Management of updates to electronic navigation products

oX

The oceanXpress™ service provides the update and management of essential electronic navigational products, including ENC's and Admiralty Digital Products.

Updates are accessed via ChartCo's oceanXpress™ software. This software intelligently manages chart updates and then offers the choice of CD or ethernet delivery to the ECDIS.

Benefits

oceanXpress™ ensures that data is always received automatically on board, on time, regardless of external delays or changes to vessel schedules, with no action required from shore-based managers.

The oceanXpress™ range of services is available through ChartCo Broadcast or ChartCo Select. It utilises ChartCo's standard software application, oceanMaster™, to manage these services, thus providing the ability to add other ChartCo services without a software upgrade.

oceanXpress™ provides delivery and management of updates to the following electronic navigation products in the catalogue:

- ENC updates (AVCS, Primar).
- ARCS updates.
- ADLL updates.
- ADRS updates.

Key Features

- Remote delivery to vessels at sea.
- Ensures electronic navigation data is kept up to date, enhancing safe, compliant navigation.
- Fully compatible with all ECDIS.
- Network transfer of ENC updates direct to ECDIS.
- Available through quarterly or annual subscription.

Automatic updates of electronic navigational data using ChartCo's world-leading email, internet and broadcast delivery system. Make every voyage safer and smarter.



AVManager™

Protection against viruses, spyware and adware

AVM

AVManager™ delivers a daily anti-virus update to PCs on vessels at sea, providing for the peace of mind that comes with knowing that all of a vessel's essential data and information is protected. Free updates and upgrades for new releases are available and there are no hidden costs.

In addition to the daily update, a CD is sent out every three months, giving a full engine update.

Benefits

AVManager™ is a powerful anti-virus protection which offers complete defence against viruses, spyware, trojans, adware and potentially unwanted applications (PUAs) for both Windows and Mac file servers, computers and laptops.

Behavioural Genotype Protection identifies malicious code and blocks it before execution, giving the benefits of a Host Intrusion Prevention System (HIPS).

High performance scanning can be performed on access, on demand and automatically at scheduled times. Decision Caching technology means only those files that have changed are re-scanned.

Computers can be completely disinfected in a single operation. Unwanted registry entries, running processes and even files on disk are removed.

Remove the cost of CD delivery from the office ensuring the anti-virus system is kept current, protecting key navigational data.

Key Features

- Complete protection against viruses, spyware and adware.
- Protect data – stay protected.
- Daily update delivery.
- Single/multi-user option.
- Available through quarterly or annual subscription.

Safe data, giving peace of mind:
daily updates ensuring current protection
at all times. Intelligent anti-virus software
with 24/7 technical support from
ChartCo experts.

RegsManager™

Relevant documentation – always up to date

RM

ChartCo RegsManager™ meets a growing requirement for vessels to have easy and up to date access to the relevant documentation, required to be carried by the Safety of Navigation Regulations 2002.

RegsManager™ is the result of a partnership between ChartCo and Regs4Ships, a company with expert knowledge in the field of flag state laws and notices. This collaboration ensures that the service fully meets the expectations of the maritime industry in bringing together the benefits of electronic data, timely updates and related information.

Benefits

Information is held within an easily accessible database, allowing fast and accurate searching, using keywords and titles. The database is held and updated by ChartCo automatically.

The service is based around national flag state regulation, shipping notices and codes of practise, with relevant links to the sections of MARPOL, SOLAS and STCW.

RegsManager™ is accessible through the ChartCo oceanMaster™ software suite, which integrates all other ChartCo services as required.

Subscription to RegsManager™ allows shore-based staff to benefit by accessing data on-line.

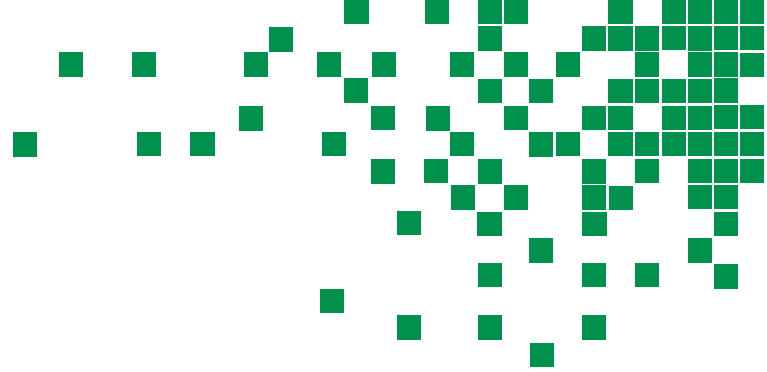
Be informed. Understand regulation.
Save time by removing uncertainty
about regulatory compliance and
demonstrate due diligence.

Key Features

- **Standard Service**
Entry level subscription provides access to Flag State Legislation and Documentation.
- **Premium Service**
Standard Service plus SOLAS, MARPOL, STCW, EU Directives and ILO Conventions.
- **Professional Service**
Premium Service plus IMO resolutions, Circulars and a selection of codes (Contact ChartCo for Flag Regulations availability as they are constantly being added to).
- Data referring to Acts, Regulations, Codes of Practice, Shipping Notices, SOLAS, Marpol and STCW.
- Prompt and reliable updating through ChartCo.
- Comprehensive indexing and amendment history.
- Available through annual subscription.

News Services

Up to date news whilst at sea



NS

Vessel to shore communication has never been more essential to ensure crew welfare and boost morale.

In association with Headland Media, one of the leading providers of news to the marine community, ChartCo publishes a range of news services for vessels at sea, all available through ChartCo Broadcast or ChartCo Select.

ChartCo International

ChartCo International is a daily electronic newspaper containing extensive international news together with political, financial, weather and sporting items.

ChartCo Regionals

Regional supplements are transmitted each day for various nationalities.

ChartCo Special Editions

Sports Special Editions can be provided throughout a selected fixture to provide in depth coverage together with pre and post event analysis of key sporting events worldwide. All subscribers are notified of coverage prior to the event.

Benefits:

Benefit from daily news, regional supplements and special editions delivered directly to your vessel at sea.

The combination of global and regional news will satisfy the most demanding of crews.

Key Features:

- Automated receipt onboard.
- No administration burden for office staff.
- Available through quarterly or annual subscription.

Stay up to date with global and regional news, wherever you are.

Piracy Alert Data

Up to date live piracy data

PAD

ChartCo's Piracy Alert Data is sourced from the International Maritime Bureau (IMB) Piracy reporting Centre (PRC). Its main objective is to be the first point of contact for the vesselmaster to report an actual or attempted attack. The ChartCo service enables round-the-clock watch on the world's shipping lanes, reporting pirate attacks and issuing warnings about piracy hotspots to shipping.

It is integrated into PassageManager™ as a Live Piracy Map showing all the piracy and armed robbery incidents reported to the IMB Piracy Reporting Centre during the year.

Benefits

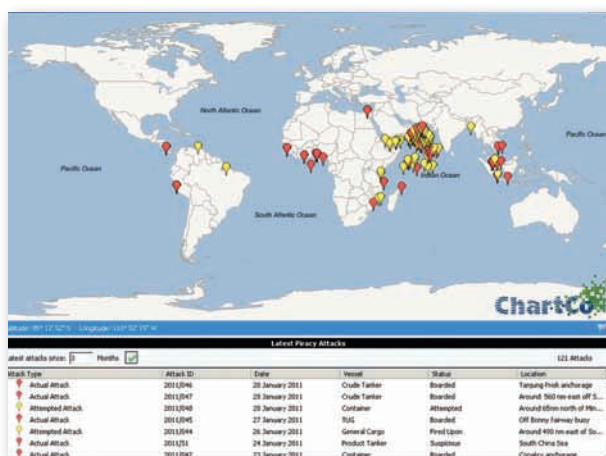
Piracy Alert Data raises awareness, on the vessel, of areas of high risk associated with piratical attacks.

Data can be accessed via PassageManager™, ensuring that you benefit from the most up to date piracy data available.

Full integration means that all piracy data is included in any voyage planning.

Key Features

- Updated daily.
- Full integration with PassageManager™.
- Reports on all historical events.
- Available through quarterly or annual subscription.



Attack Summary

Attack ID: 2011/047

Attack Date: 28 January 2011

Vessel: Crude Tanker

Status: Boarded

Location: Around 560 nm east off Socotra island

Details

28.01.2011: 0400 UTC: Posn: 11:17.5N - 063:33.4E, 560 nm east off Socotra island, (Off Somalia).

Pirates in four skiffs launched from a mother vessel armed with RPG and guns chased a tanker underway. The tanker

Global Support

ChartCo offers global support through a worldwide network of service engineers who are able to fit equipment and install software at key international ports.

Using fully trained engineers, ChartCo will ensure that the system is commissioned and the crew trained with the minimum of inconvenience.

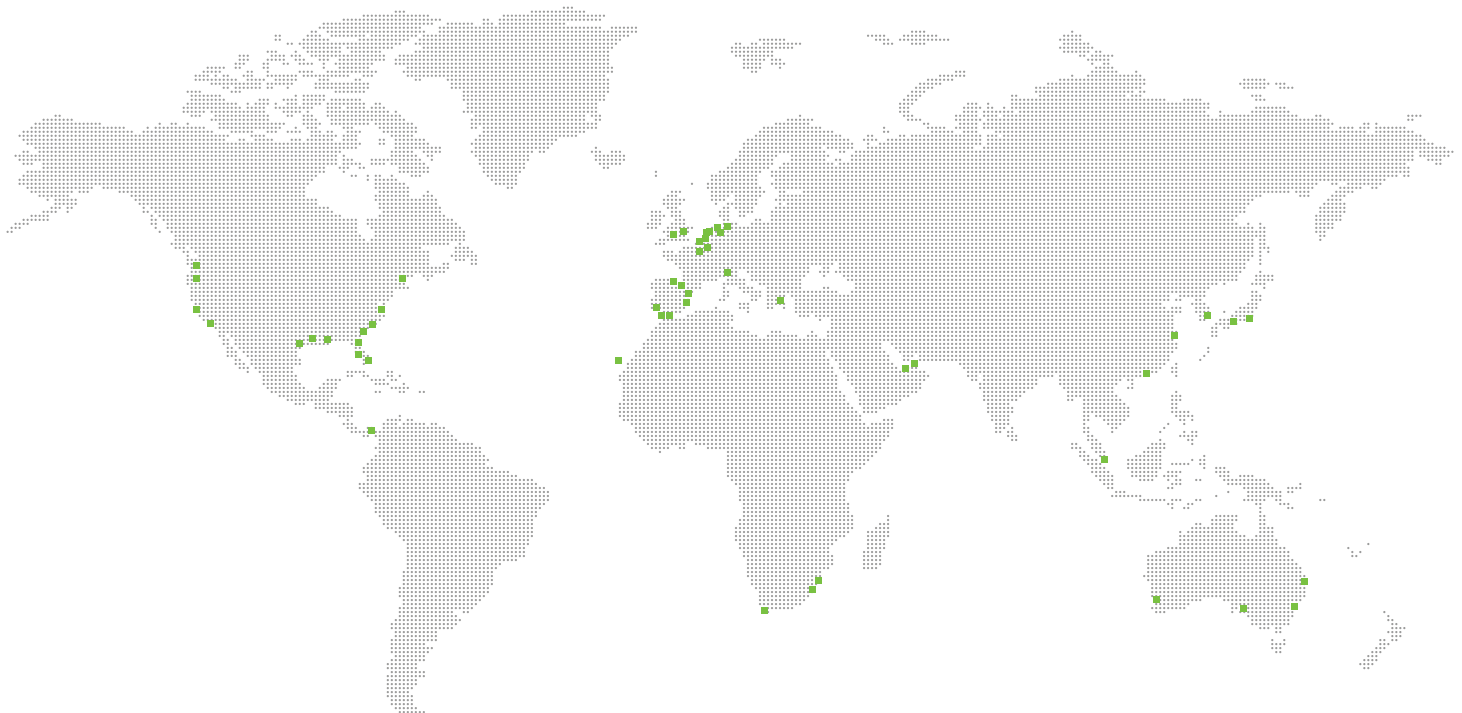
Every customer receives 24/7 technical support from our in-house Support Desk.

ChartCo Support Desk (24 hr)

Tel: +44 20 8267 0005

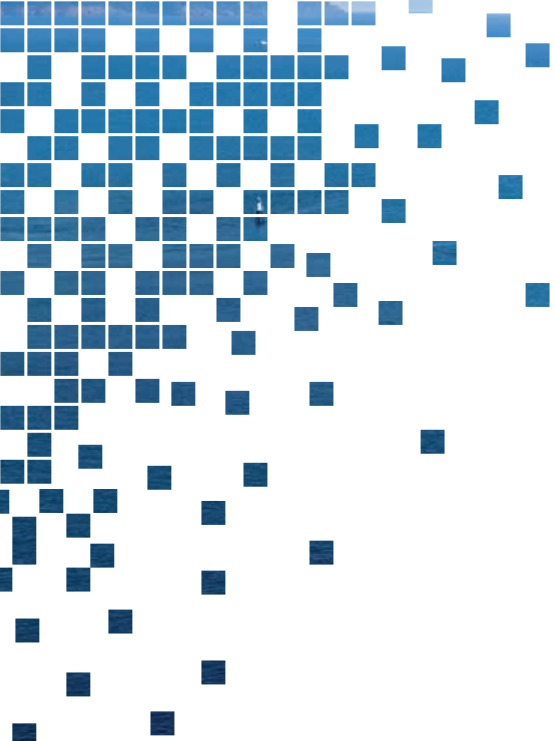
Fax: +44 20 8267 0004

Email: support@chartco.com



■ ChartCo Worldwide Service Agents

Expert support from real people, 24/7



New North Road, Hainault, Ilford
Essex IG6 2UR, United Kingdom

Tel: +44 20 8267 0003

Fax: +44 20 8267 0004

Email: sales@chartco.com

Web: www.chartco.com